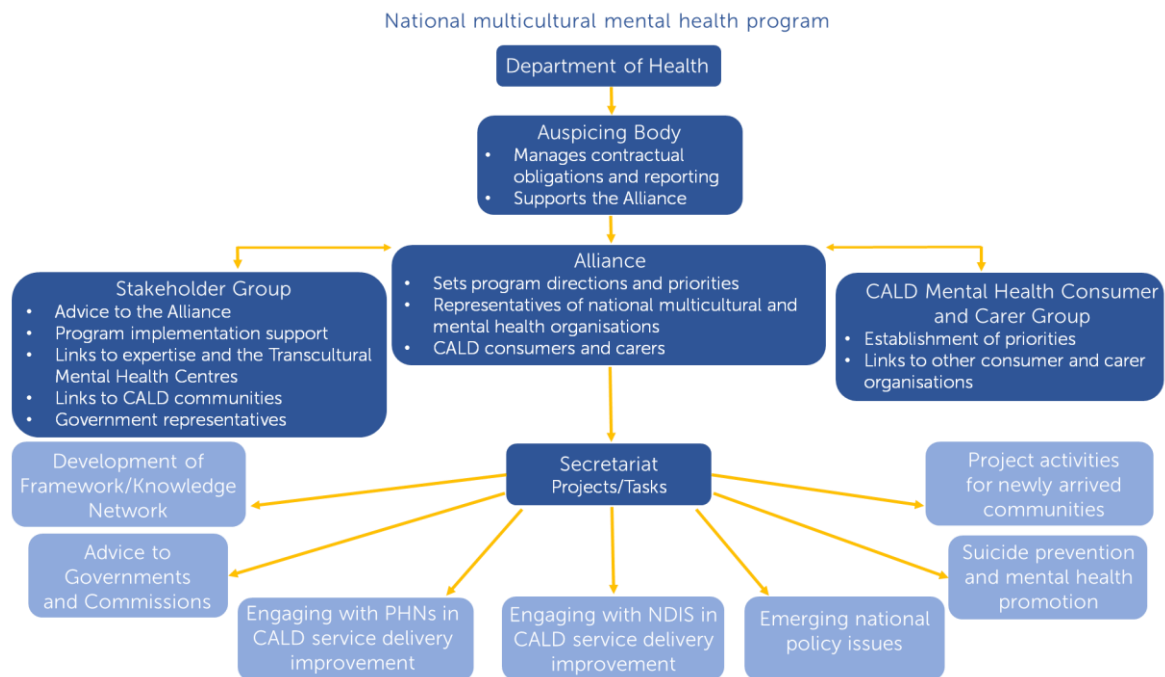


# DRAFT OPERATING SPECIFICATIONS

## Draft Operating Specifications for a National Multicultural Mental Health Program

The preferred structure for a national multicultural mental health program includes an auspicing body and three key groups, as displayed in the following diagram. The suggested roles and responsibilities for the auspicing body and these groups are outlined below.



### Auspicing body

Auspicing arrangements must leave no doubt as to which organisation has ultimate responsibility to ensure that contract compliance and accountability requirements are met.

The auspicing body is responsible for:

- contracting with the Department of Health (and others if required)
- establishing appropriate financial controls
- establishing and supporting the Alliance (see below) to guide the work of the program, and ensuring it has the resources it needs to meet its obligations



- monitoring ongoing compliance and reporting arrangements
- employing program staff to deliver the workplan agreed by the Alliance.

## Alliance

A well-functioning Alliance lies at the heart of the future program's success. The group would bring together the two sectors which have traditionally nurtured and sponsored multicultural mental health – the multicultural sector and the mental health sector.

Membership of the Alliance could be comprised of:

- A Board member and CEO from two national peak multicultural organisations (four people)
- A Board member and CEO from two national peak mental health organisations (four people)
- A CALD mental health consumer representative and a CALD mental health carer representative from the program's consumer and carer group

For example, membership could include:

- A Board member and the CEO of Mental Health Australia;
- A Board member and the CEO of Suicide Prevention Australia;
- A Board member and the CEO of FECCA;
- A Board member and the CEO of NEDA;
- A CALD mental health consumer representative and a CALD mental health carer representative from the program's consumer and carer group.

The Alliance will be responsible for:

- developing the national multicultural mental health program and its workplan
- establishing the program's strategic direction and priorities
- monitoring the ongoing performance of the program and revising direction as required
- maintaining stakeholder engagement and supporting the program's objectives
- ensuring the Auspicing body has access to all the information that it requires to meet its obligations
- linking the program into the broader agenda of mental health reform

## Stakeholder group

This group would:

- Be a key source of advice in relation to multicultural mental health expertise.
- Assist in Program implementation.
- Support dissemination of national approaches.
- Provide links to local ethnic communities.



Membership could include, for example:

- Jurisdictional transcultural mental health services;
- FASSTT;
- Other specialist CALD mental health organisations;
- Multicultural Youth Advocacy Network;
- Representatives from multicultural communities;
- Representatives from government(s) - link to Mental Health, Drug and Alcohol Principal Committee (MHDAPC); and others

### **Consumer and carer group**

Over recent years there has been some investment in the development of a National CALD Consumer and Carer Working Group.

There is a need to build on this platform through continued strengthening and further development of CALD consumer and carer expertise. One way this strengthening could occur is by building the capacity of individuals to link to their constituencies, giving them the skills, opportunity and responsibility to clearly reflect those issues of most systemic and strategic interest to consumers and carers.

Representatives of this group would also participate as part of the Alliance, with a view to ensuring the program as a whole operates with fidelity to the views and interests of mental health consumers and carers from CALD communities.

This group should also link up with existing mental health consumer and carer structures, such as the National Mental Health Consumer and Carer Forum.

Membership:

A CALD mental health consumer representative and a CALD mental health carer representative nominated by each state and territory. Representative selection could involve, for example, selection by a state multicultural organisation or consumer / carer peak (similar to NMHCCF member selection).

