

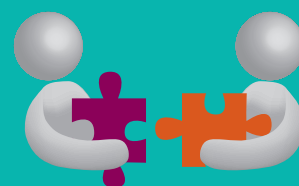


DO YOU CARE FOR SOMEONE APPLYING FOR NDIS SUPPORTS?

Do you care for someone who is eligible for National Disability Insurance Scheme supports, but are unsure about the application and planning process?



We can put you in contact with carers who have successfully helped the person they care for to receive appropriate NDIS supports. They are happy to share their experiences so that you can feel more confident with the NDIS process.



If you would like to chat with someone who has been in your position and successfully navigated the NDIS, we can put you in touch via phone or in person.



If you would like to know more, or if you know other carers you think may benefit from this 'Peer Conversation Project', please contact Carers Australia at:

Carers.NDIS@carersaustralia.com.au or (02) 6122 9900



**FURTHER INFORMATION ON CARERS AND THE NDIS CAN BE FOUND BY
CLICKING ON THE 'NDIS & CARERS' TAB AT
WWW.CARERSAUSTRALIA.COM.AU**